



Installation Instructions



Product: **Front Trackbar Chassis Brace + Chassis Brace Connector**

Part Number: **PN OGS163 / 164**

Application: **Jeep Wrangler JK, 2007+**

Welcome

CONGRATULATIONS on purchasing the Front Trackbar Chassis Brace and/or Chassis Brace Connector from JKS Manufacturing. We are committed to providing you with the best products available and your satisfaction is our first priority.

Important

INSTALLATION OF CHASSIS BRACE CONNECTOR PN OGS164 REQUIRES WELDING by a qualified welder or metal fabricator. A bolt-on installation is not possible for this product.

NOT COMPATIBLE WITH TeraFlex track bars.

NOT COMPATIBLE WITH frame-mounted track bar drop brackets.

Tools Required

- Hydraulic Floor Jack & Jack Stands
- Metric/Standard Socket Wrench Set
- Torque Wrench
- 15/16" Open End Wrench
- Black Marker or Metal Scribe
- Flat Black Spray Paint
- Anti-Seize Lubricant
- Compact Die Grinder with Sanding Wheel (or equivalent tool for removing paint from chassis)
- Welding Equipment (PN OGS164 only)
- Factory Service Manual (recommended)

** Indicates tool that may not be necessary for every installation. Thoroughly read instructions in advance to determine which tools will be required for your application.*

Parts

	DESCRIPTION	PART #	QTY
A	Trackbar Chassis Bracket	PN 163010	1
B	7/16" x 1" GR5 Bolt	PN 13155	2
C	7/16" Flat Washer	PN 33084	4
D	7/16" Locking Nut	PN 37266	2
E	Chassis Connector Tube	PN 164001	1
F	Frame Bracket	PN 164002	1
G	1/2" x 5/8" Rod End	PN LXM8-10	1
H	1/2" x 5/8" LH Rod End	PN LXML8-10	1
I	5/8" Jam Nut	PN 36264	1
J	5/8" LH Jam Nut	PN 36964	1
K	1/2" x 2" GR5 Bolt	PN 17211	2
L	1/2" Flat Washer	PN 33086	4
M	1/2" Locking Nut	PN 37308	2

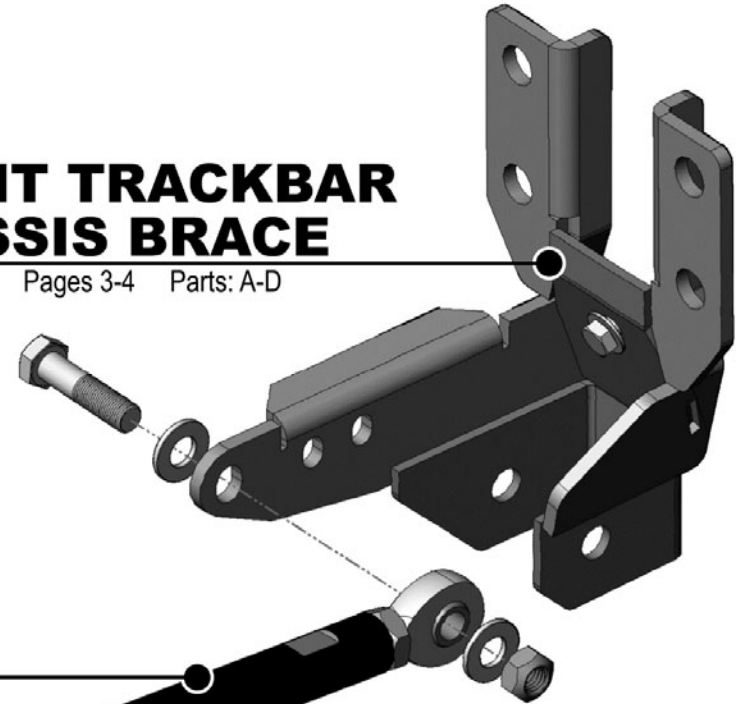
**FRONT TRACKBAR CHASSIS BRACE
+ CHASSIS BRACE CONNECTOR**

The Front Trackbar Chassis Brace and Chassis Brace Connector are two separate products that interconnect to dramatically increase the strength and load capacity of the front track bar mount.

Each product is individually sold and packaged, as well as separately installed for ease of fitment. For best results, please follow the sequence outlined in these instructions.

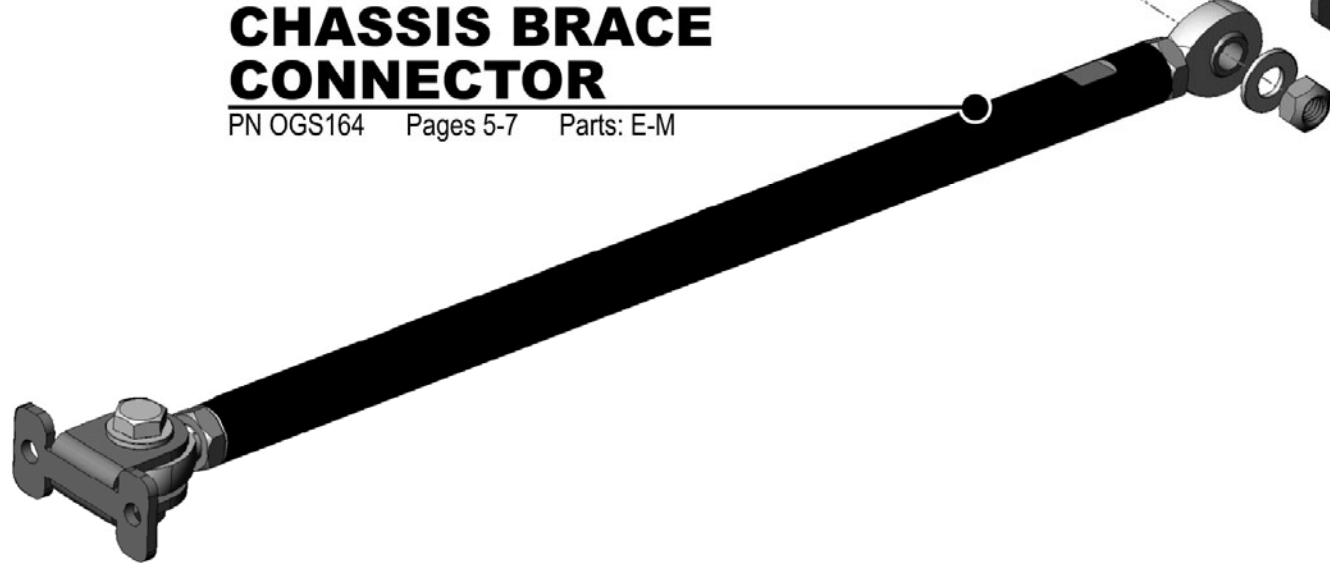
**FRONT TRACKBAR
CHASSIS BRACE**

PN OGS163 Pages 3-4 Parts: A-D



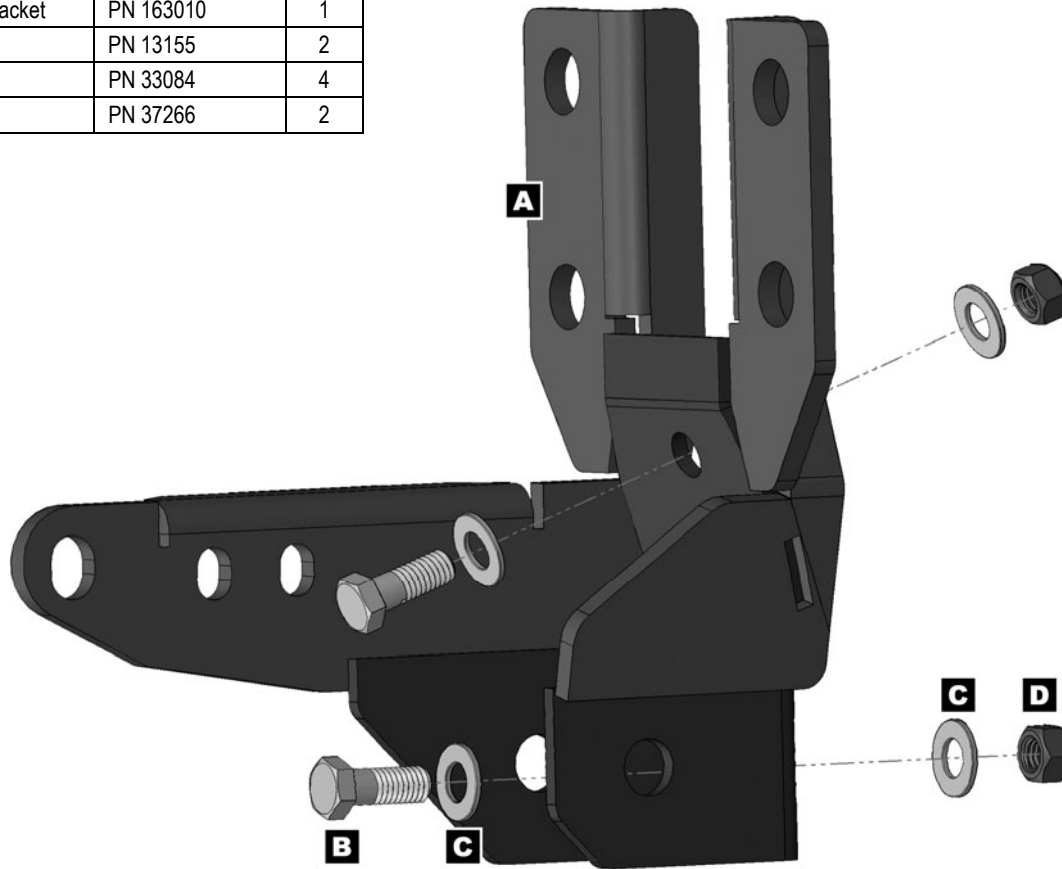
**CHASSIS BRACE
CONNECTOR**

PN OGS164 Pages 5-7 Parts: E-M



Parts

	DESCRIPTION	PART #	QTY
A	Trackbar Chassis Bracket	PN 163010	1
B	7/16" x 1" GR5 Bolt	PN 13155	2
C	7/16" Flat Washer	PN 33084	4
D	7/16" Locking Nut	PN 37266	2



Installation

- ❑ 1. **INSTALL TRACKBAR CHASSIS BRACKET**
 - Raise and support the vehicle with jack stands positioned behind the front lower suspension arm brackets.
 - Raise and support the front axle housing with a hydraulic jack to relieve any tension from the track bar mounting bolts.
 - Remove the nut and bolt that secures the front track bar to the factory chassis bracket. Retain the original hardware.
 - Remove the front track bar from the chassis bracket.
 - Remove the four (4) steering box bolts.
 - Position the Trackbar Chassis Bracket (A) over your factory track bar bracket.

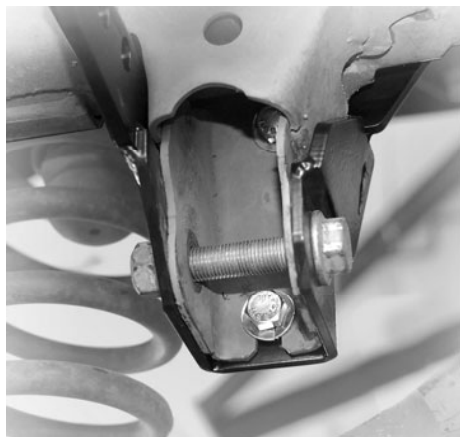


- Re-insert the original steering box bolts and thread into mounting holes by hand. Do not tighten yet.

- Insert OE track bar bolt (to keep mounting holes aligned) and loosely install original nut. Do not tighten.



- Make sure steering box aligns perfectly with original position on chassis, and then tighten steering box mounting bolts until snug.
- Insert a 7/16" x 1" Bolt (B) with 7/16" Flat Washer (C) into each of the two holes in the factory track bar bracket and through the Trackbar Chassis Bracket (A). Secure each bolt with another 7/16" Flat Washer (C) and 7/16" Locking Nut (D).
- Tighten both 7/16" nuts to 50 ft-lbs. using a torque wrench.



- Tighten all four (4) steering box bolts to 70 ft-lbs. using a torque wrench.

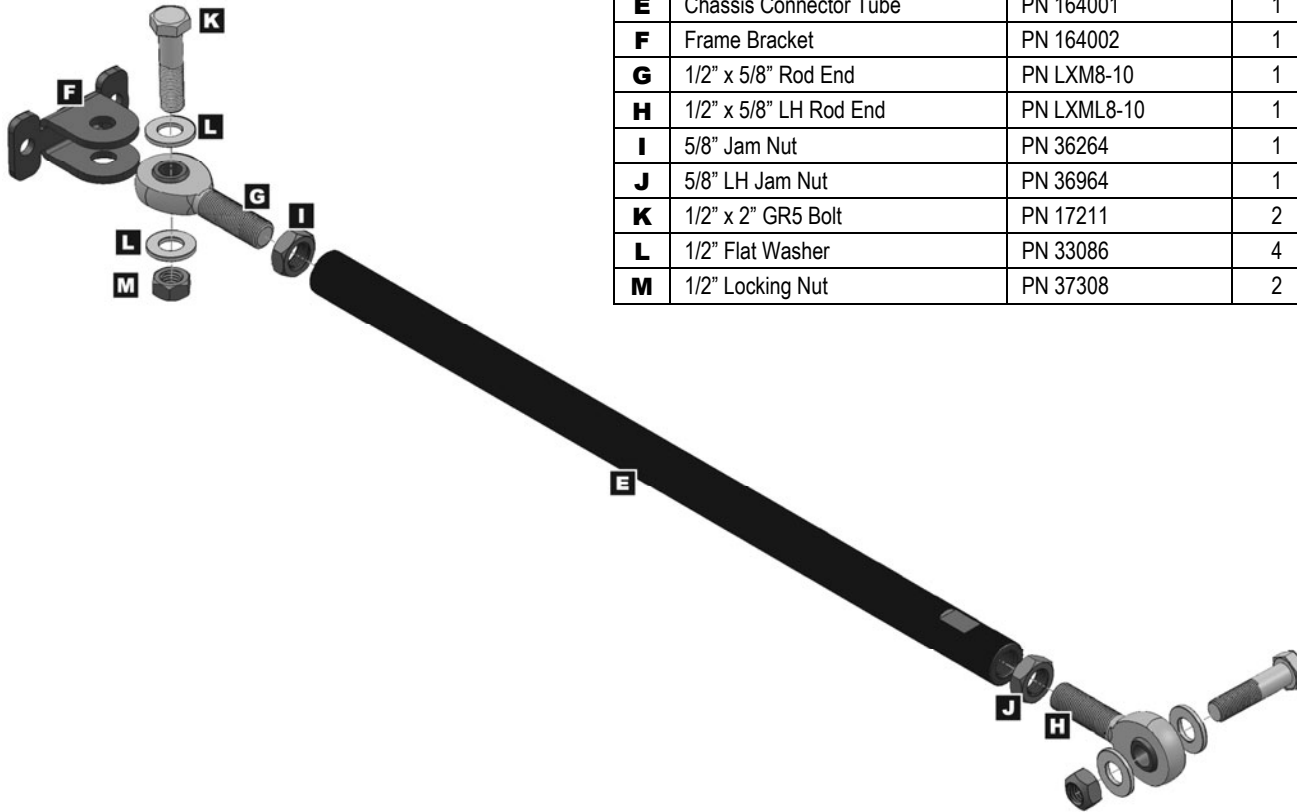
Proceed to page 5 if you are also installing Chassis Brace Connector PN OGS164 at this time.

- or -

Skip to page 7 if you are only installing the Front Trackbar Chassis Brace PN OGS163.

Parts

	DESCRIPTION	PART #	QTY
E	Chassis Connector Tube	PN 164001	1
F	Frame Bracket	PN 164002	1
G	1/2" x 5/8" Rod End	PN LXM8-10	1
H	1/2" x 5/8" LH Rod End	PN LXML8-10	1
I	5/8" Jam Nut	PN 36264	1
J	5/8" LH Jam Nut	PN 36964	1
K	1/2" x 2" GR5 Bolt	PN 17211	2
L	1/2" Flat Washer	PN 33086	4
M	1/2" Locking Nut	PN 37308	2



Installation

- ❑ **2. MOUNT CONNECTOR TO CHASSIS BRACKET**
 - Assemble Chassis Brace Connector by completely threading a 5/8" Jam Nut (I and J) onto each 1/2" x 5/8" Rod End (G and H), and then inserting a rod end into each end of the Chassis Connector Tube (E). Leave approximately 1/2" of thread showing between ends of tube and jam nuts.
 - Locate the slotted end of the Chassis Connector Tube (E). Line up the rod end closest to it with the corresponding hole in Trackbar Chassis Brace (A).



- Insert a 1/2" x 2" Bolt (K) with 1/2" Flat Washer (L) through the chassis bracket and rod end. Secure the bolt with another 1/2" Flat Washer and a 1/2" Locking Nut (M). Tighten hardware until snug.



3. MOUNT CONNECTOR TO PASSENGER-SIDE CHASSIS RAIL

- On opposite end of Chassis Connector Tube (E), install weld-on Frame Bracket (F) using a 1/2" x 2" Bolt (K), two 1/2" Flat Washers (L) and 1/2" Locking Nut (M). Tighten hardware until snug.
- Position Frame Bracket (F) on passenger-side chassis rail with bottom of mounting flange located just above radius on chassis.



- On factory 6-cylinder engine applications, Frame Bracket (F) should be located directly across from driver-side mounting point.
- On Hemi 8-cylinder engine applications, Frame Bracket (F) should be located further toward rear of vehicle to allow Chassis Connector Tube (E) to clear the engine oil filter. Leave enough distance between Connector Tube and filter to allow for "engine torqueing", and to accommodate oil filter changes.



Photos in this document illustrate installation on Hemi 8-cylinder application.

- Make sure 1/2" x 5/8" Rod Ends (G and H) do not bottom out on either Trackbar Chassis Bracket (A) or weld-on Frame Bracket (F).
- Twist the Chassis Connector Tube (E) to lengthen the member until Frame Bracket (F) is pressed firmly against desired mounting location on chassis.
- Transfer perimeter of mounting flanges and location of plug weld holes onto chassis using a marker or scribe.



- Twist the Chassis Connector Tube (E) in opposite direction to shorten the member and move the Frame Bracket (F) out of position.
- Remove any paint from area on chassis where location of plug weld holes are marked.



HINT: A die grinder with a sanding wheel is useful for removing paint from chassis.

- Reposition Frame Bracket (F) and lengthen the Chassis Connector Tube (E) until weld-on bracket is pressed firmly against desired mounting location on chassis.
- Tack weld Frame Bracket (F) to chassis rail.

- Remove the 1/2" hardware that secures the Rod End to Frame Bracket (F) and move the Chassis Connector Tube (E) out of position for easier access to plug weld holes.



- Fuse the Frame Bracket (F) to chassis by plug welding each side of the mounting flange.



- Allow welded area to cool. Then apply black spray paint to Frame Bracket and any bare metal to protect the surfaces from corrosion.
- Move Chassis Connector Tube (E) back into position and secure Rod End to Frame Bracket (F). Tighten hardware until snug.
- If necessary, twist Chassis Connector Tube (E) until you reach neutral resistance.
- Fully tighten both 5/8" Jam Nuts (I and J) against Chassis Connector Tube (E).



- Using a torque wrench, tighten both 1/2" x 2" Bolts (K) to 60 ft-lbs.

❑ 4. RE-INSTALL TRACK BAR

- Apply anti-seize lubricant to bolt threads of original track bar mounting hardware.
- Re-install the track bar at the chassis bracket. Insert the original bolt and nut and lightly snug the hardware. **Do not tighten original track bar hardware until vehicle has been lowered and suspension is supporting full vehicle weight.**



- Lower vehicle to ground and tighten track bar bolt to 125 ft-lbs.

If you encounter any problems with your installation and setup, please contact JKS Manufacturing for technical assistance.

JKS Technical Support	
Phone	(308) 762-6949
E-mail	tech@jksmfg.com

Maintenance

Check torque specifications regularly.

Regular cleaning with pressurized water is recommended to maximize reliability.

© 2011 JKS Manufacturing, Inc & Aftermarketing, LLC
Revision Date 7/12/2011